

DEFINITION A bass tone bar is a single wooden bar percussion note designed to function within the bass and contra-bass regions of the musical spectrum.

① BAR

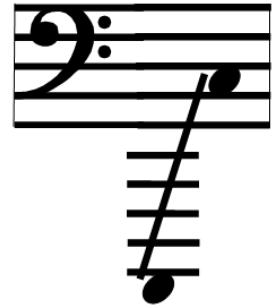
- 1-1/2 inch-thick laminated hard maple
- Durable gloss water base poly clear coat (which withstands high-impact mallet strikes)
- Holds tuning

② BAR SUSPENSION

- Heavy duty nylon cord
- Heavy duty spring tensioning system
- Non-fraying cord routing

AVAILABLE MUSIC RANGE

- C1 (Contra Bass C) to C3 (Tenor C) [32.7Hz to 130.8 Hz]



③ PIEZO TRANSDUCER

- Rigid disc transducer, high impedance
- 1/4-inch jack connector block

④ RESONATOR

- 3/4-inch Baltic birch void-free plywood
- Hard maple mounts and accents
- Walls rigidly braced
- 2-inch diameter rubber casters
- Finishes: Semi-gloss clear coat, black satin, or simulated animal fur fabric.

Recommended mallets:

- Mike Balter ([Ensemble Series](#)) No. 18 with rattan handles

